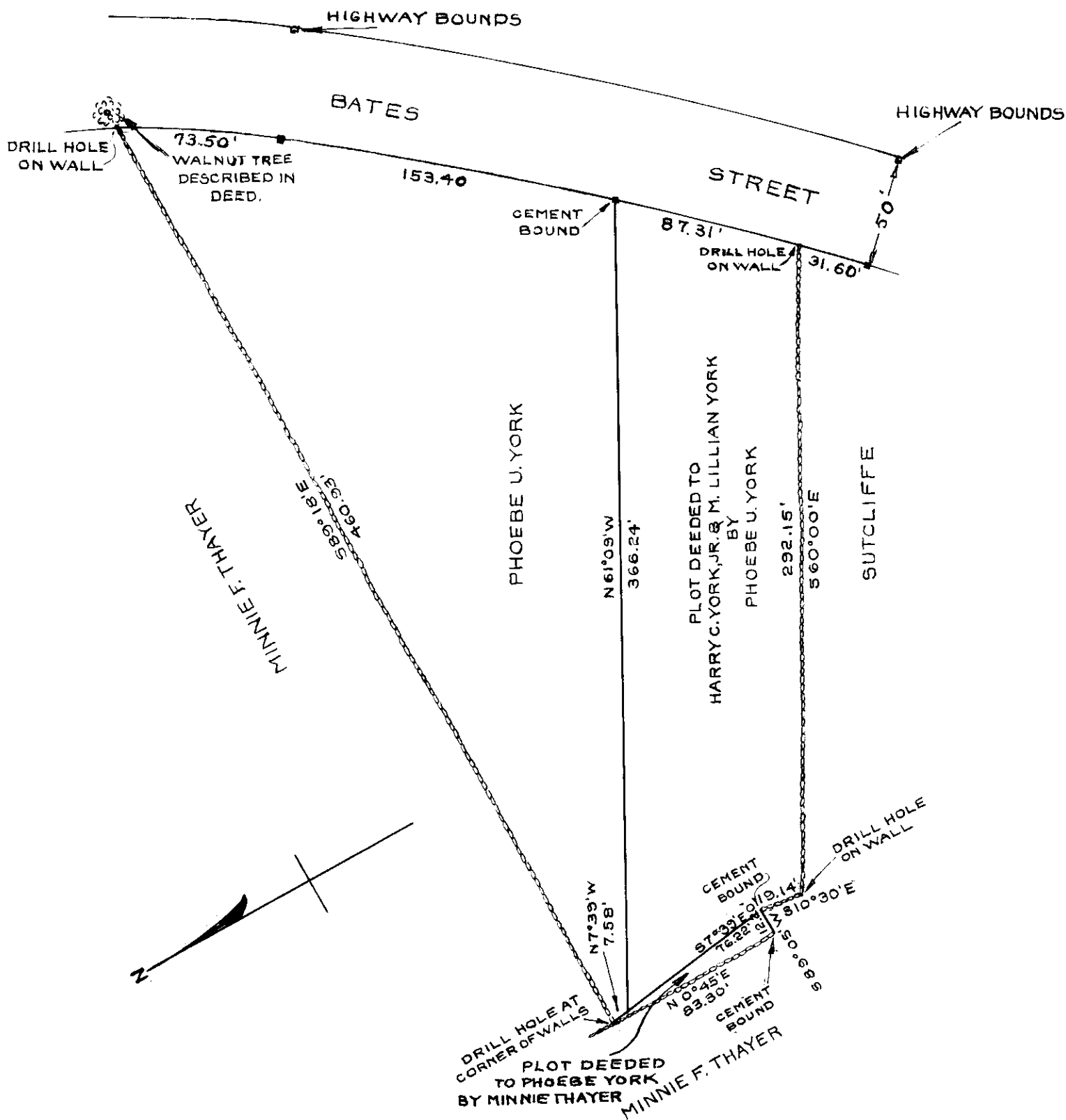


CURVE DATA OBTAINED
FROM THE 1918 RELOCATION
LAYOUT OF BATES STREET
AS SHOWN ON MASSACHUSETTS
STATE HIGHWAY PLANS.



PLAN OF
LAND IN MENDON, MASS.
OWNED BY
MINNIE F. THAYER & PHOEBE U. YORK
SHOWING THOSE PORTIONS DEEDED FROM
MINNIE F. THAYER TO PHOEBE U. YORK
AND FROM
PHOEBE U. YORK TO HARRY C. YORK JR. & M. LILLIAN YORK
SCALE 1" = 60' AUGUST 4, 1948
RAYMOND SMETHURST.

WORCESTER DISTRICT REGISTRY
OF DEEDS WORCESTER, MA

PLAN BOOK 154 PLAN 19
Received Aug. 31, 1948
9 h 00 m A
Sheet 1 of 1

ATTEST:
Anthony [Signature]
Register