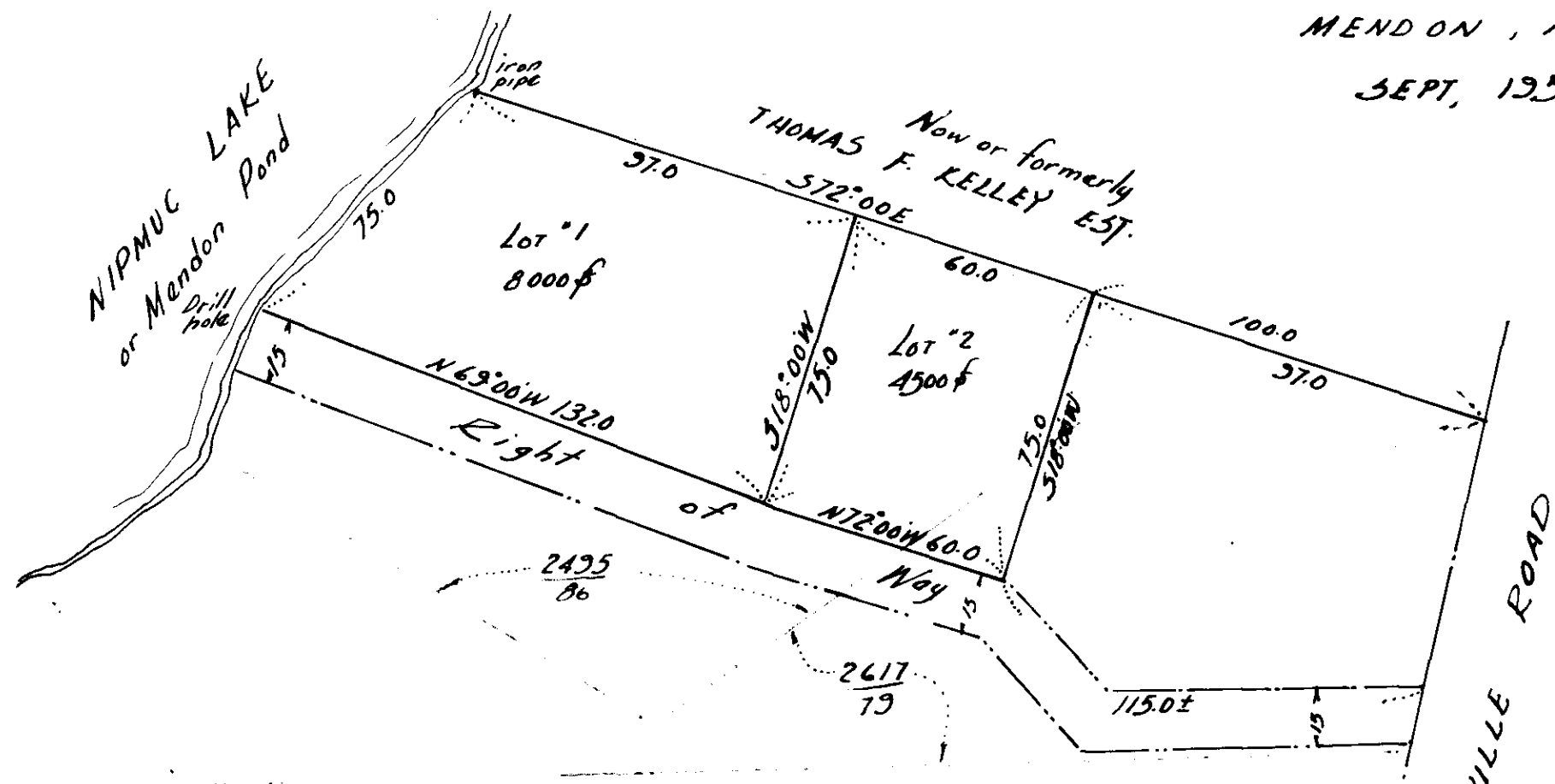


SUB-DIVISION OF LAND
owned by
CARL F. WAGNER ET AL
situated at Lake Nipmuc
MENDON, MASS
SEPT, 1953

Scale: 1 inch = 40 feet



WORCESTER DISTRICT REGISTRY
OF DEEDS-WORCESTER, MA
PLAN BOOK 193 PLAN 123
Received Nov. 9, 1953
4 h 55 m P M
Sheet 1 of 1
ATTEST: *Anthony J. Field*
Register

N
F. J. BRENNAN
SURVEYOR
UXBRIDGE, MASS.