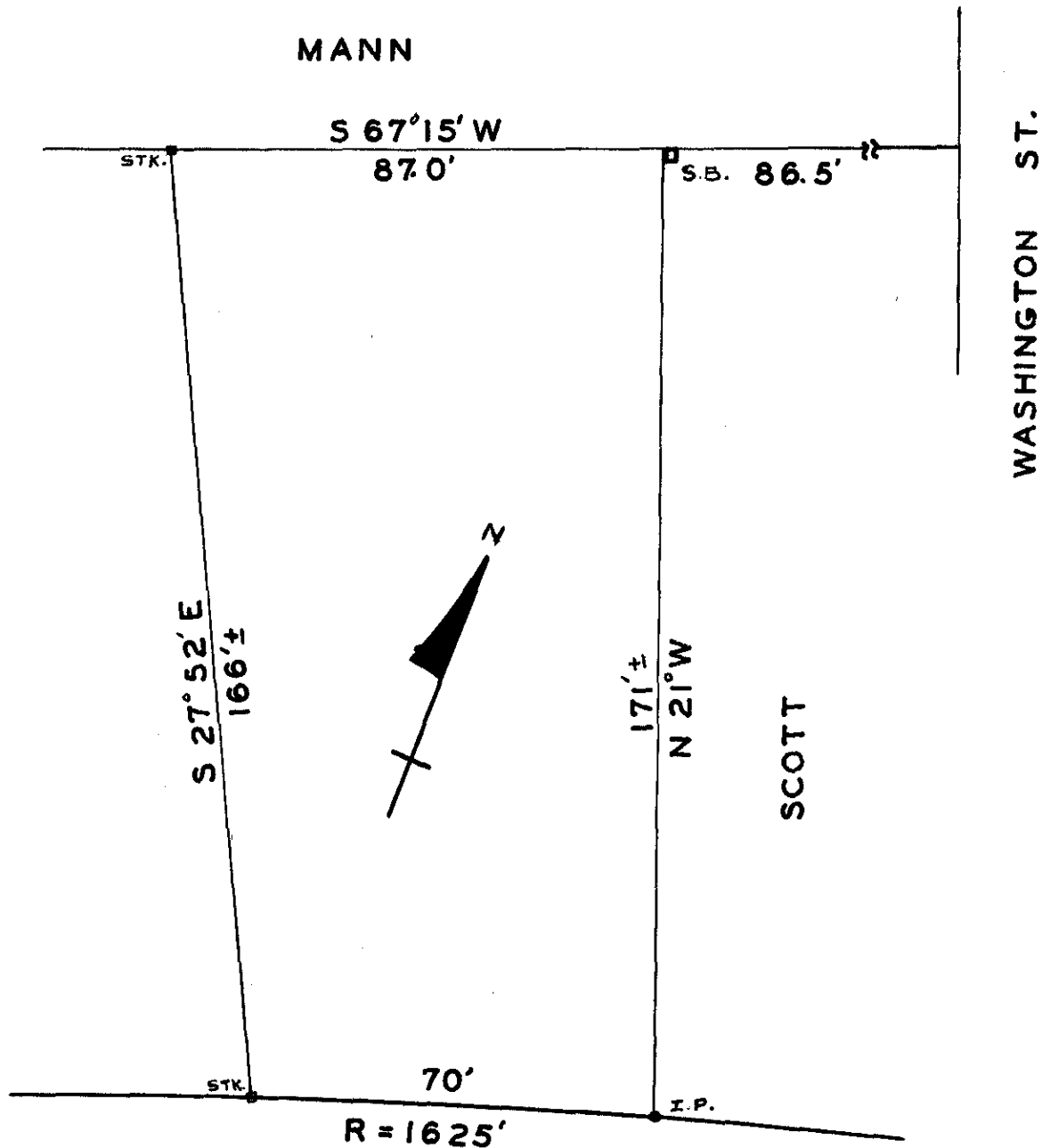


GRANTOR



MASS. STATE HIGHWAY (ROUTE 16)

LAND IN MENDON, MASS.  
 DEEDED TO  
 LESTER P. & MADELEINE W. MANN  
 BY  
 CLEMENT & RUTH M. GREENHALGH  
 SCALE: 1" = 30'      SEPT. 20, 1958

P. MAC NEVIN

WORCESTER DISTRICT REGISTRY  
 OF DEEDS-WORCESTER, MA  
 PLAN BOOK 235 PLAN 68  
 Received OCT 27 1958  
 12 h 55 m P.M.  
 Sheet 1 of 1  
 ATTEST: *[Signature]*  
 Registrar

532-28