

This land has been sub-divided. See plan with Cert. #4008. No further Certs. to be issued from this plan.

Anna Congdon

18875 A

PLAN OF LAND IN MENDON

Kenneth E. McIntyre, C.E.

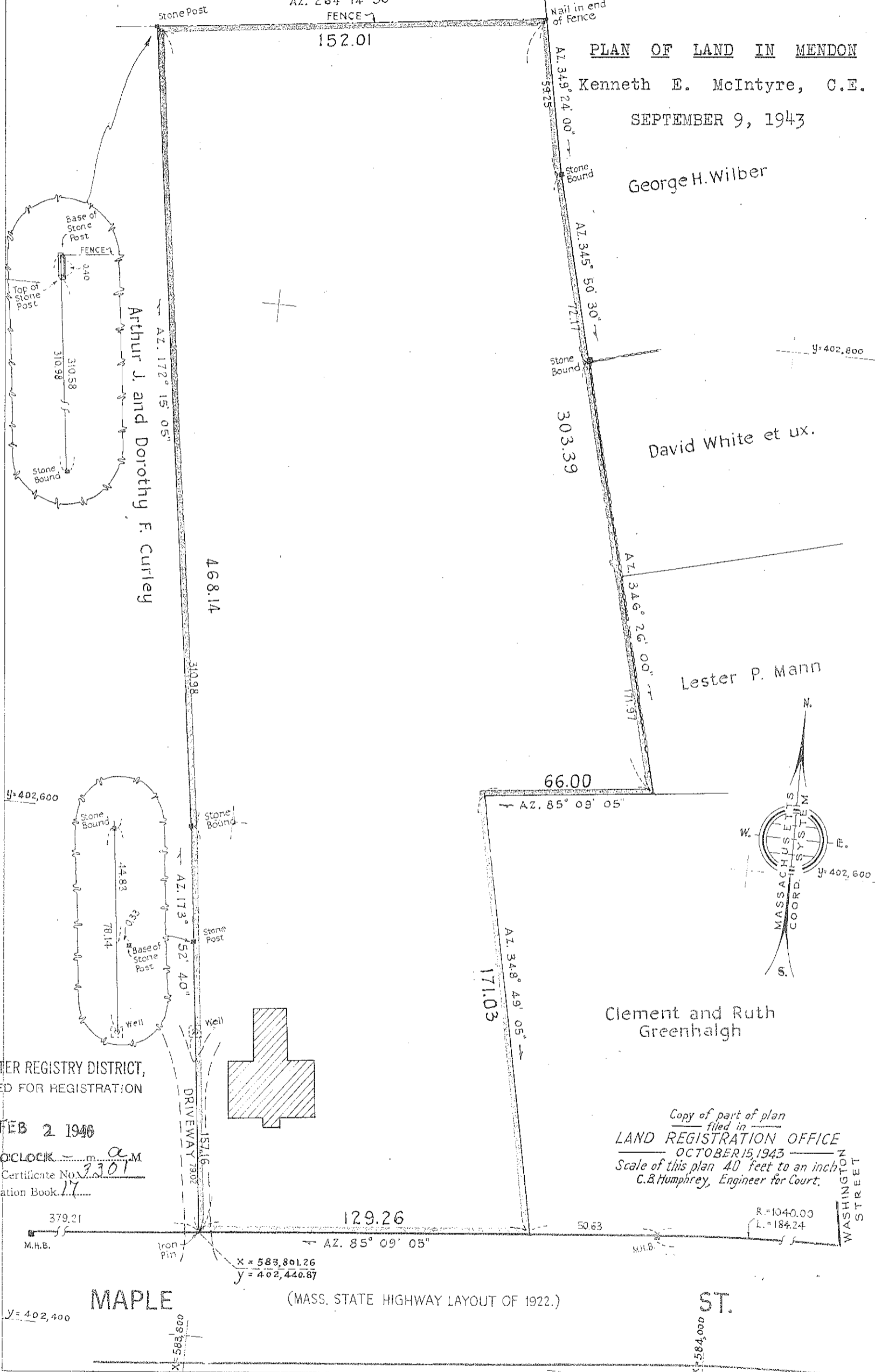
SEPTEMBER 9, 1943

George H. Wilber

David White et ux.

Lester P. Mann

Clement and Ruth Greenhalgh



WORCESTER REGISTRY DISTRICT, RECEIVED FOR REGISTRATION

FEB 2 1946

9 O'CLOCK - m. a. M

Noted on Certificate No. 3301 in Registration Book.

Copy of part of plan filed in LAND REGISTRATION OFFICE OCTOBER 15, 1943 Scale of this plan 40 feet to an inch C.B. Humphrey, Engineer for Court.