

SUBDIVISION PLAN OF LAND IN MENDON

18875 B

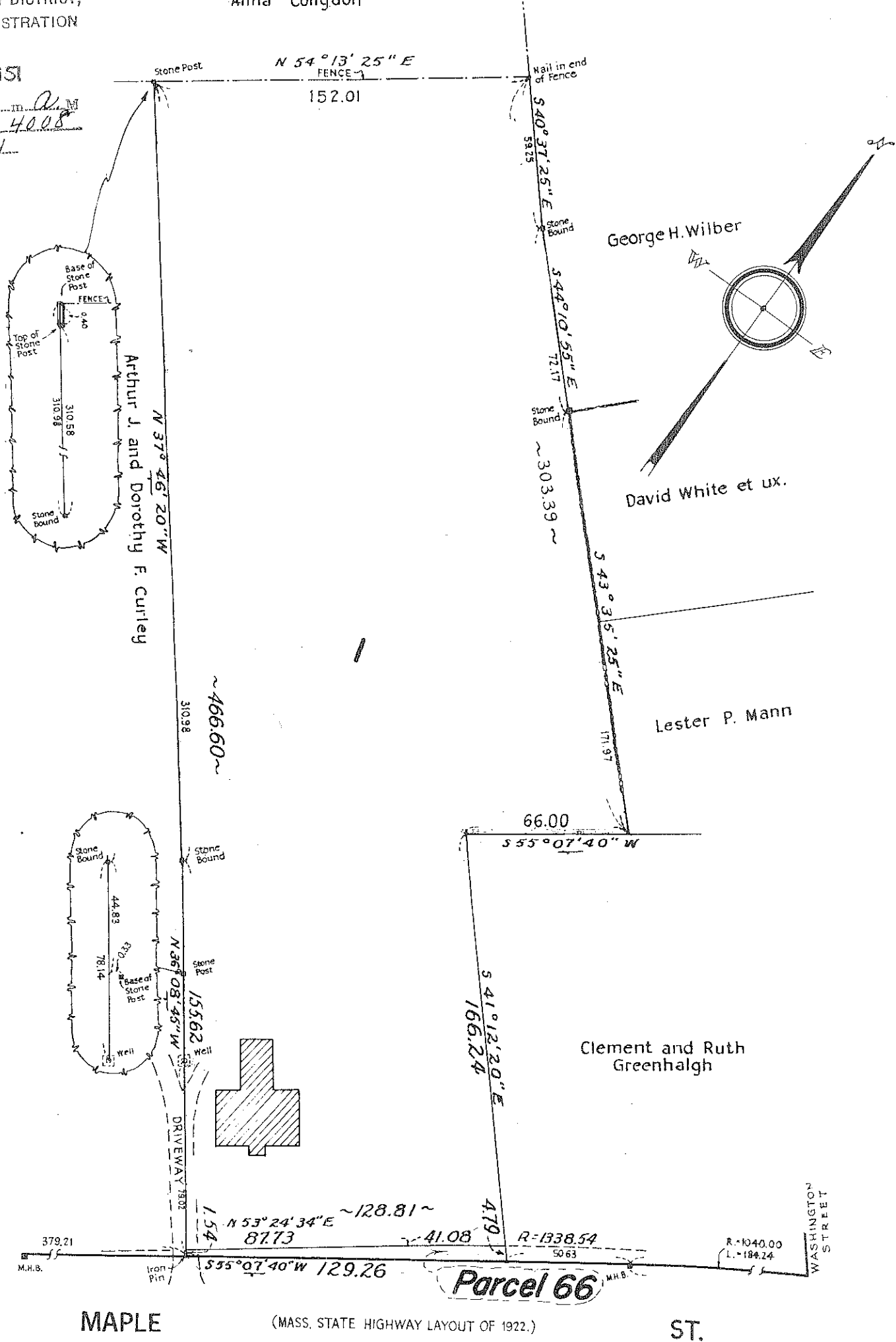
P. H. Kitfield, Chief Engineer
Massachusetts Department of Public Works

December 20, 1949
Anna Congdon

WORCESTER REGISTRY DISTRICT,
RECEIVED FOR REGISTRATION

APR 17 1951

9 o'clock m. A.M.
Noted on Certificate No. 4008
in Registrations Book 21



APR 12 1951

Subdivision of Land
Shown on Plan 18875^A
Filed with Cert. of Title No. 3301
Worcester Registry District of Worcester County

Separate certificates of title may be issued
for Lot 1 & Parcel 66 as shown hereon
By the Court

February 28, 1950

John H. Holmes
Recorder.

Copy of part of plan
filed in
LAND REGISTRATION OFFICE
FEB. 28, 1950
Scale of this plan 50 feet to an inch
W.T. Fairclough, Engineer for Court