

SIBLEY

CLOSUM

DALEY

WHEELER

Mc GAUGHY

PLAN OF LAND IN MENDON MASS.
 OWNED BY
 AUSTIN B. TAFT
 SCALE 1"=100' MAY 8, 1941
 PLAN & SURVEY BY ARTHUR H. FITZGERALD

AREA 12 ACRES ±

FRANK TAFT
HEIRS

CRUMB

BARNES

TOWNE

DUDLEY
FREEMAN

PHIPPS

MAPLE (HARTFORD TURNPIKE) ST.

TAYLOR

DOYLE

BLACKSTONE ST.

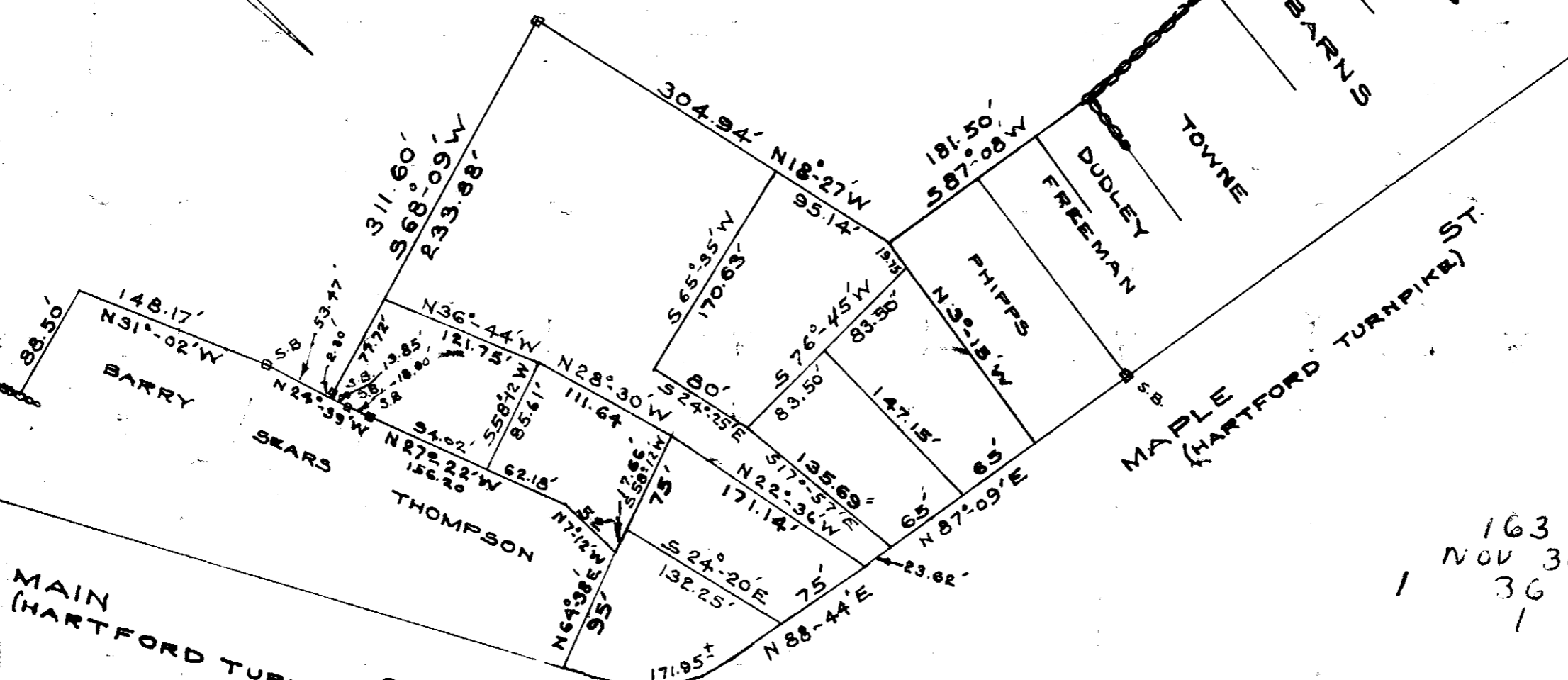
VINCENT

BARRY

SEARS

THOMPSON

MAIN (HARTFORD TURNPIKE) ST.



163 76
 NOV 30 1949
 36 P
 1 1