

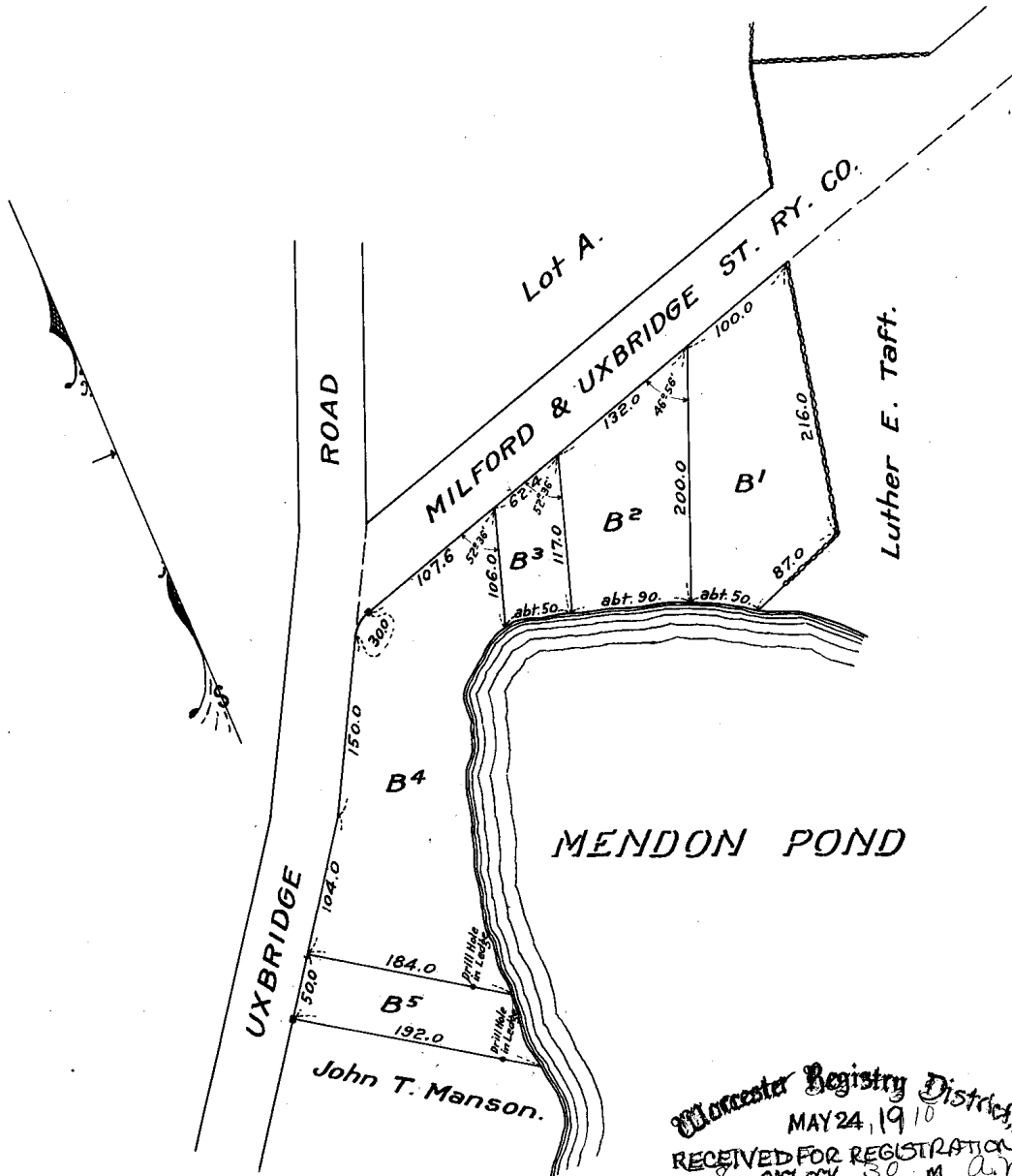
Subdivision of Lot B shown on plan filed with Cert. of Title No. 169, Worcester District Registry of Deeds.

Land in Mendon.

Scale - 100 feet to an inch.

OCT. 1909.

Henry W. Gaskill, C.E.



Separate certificates of title may be issued for lots B¹, B², B³, B⁴ and B⁵ as shown hereon. By the Court.

May 17, 1910 - *Charles Smith* Recorder.

1399 B

Worcester Registry District
MAY 24 1910
RECEIVED FOR REGISTRATION
8 O'CLOCK 30 M A.M.
NOTED ON CERTIFICATE NO 235
IN REGISTRATION BOOK 2 PAGE 235.

Copy of part of plan
filed in
LAND REGISTRATION OFFICE
May 16, 1910.
C. B. Humphrey, Surveyor for Court.