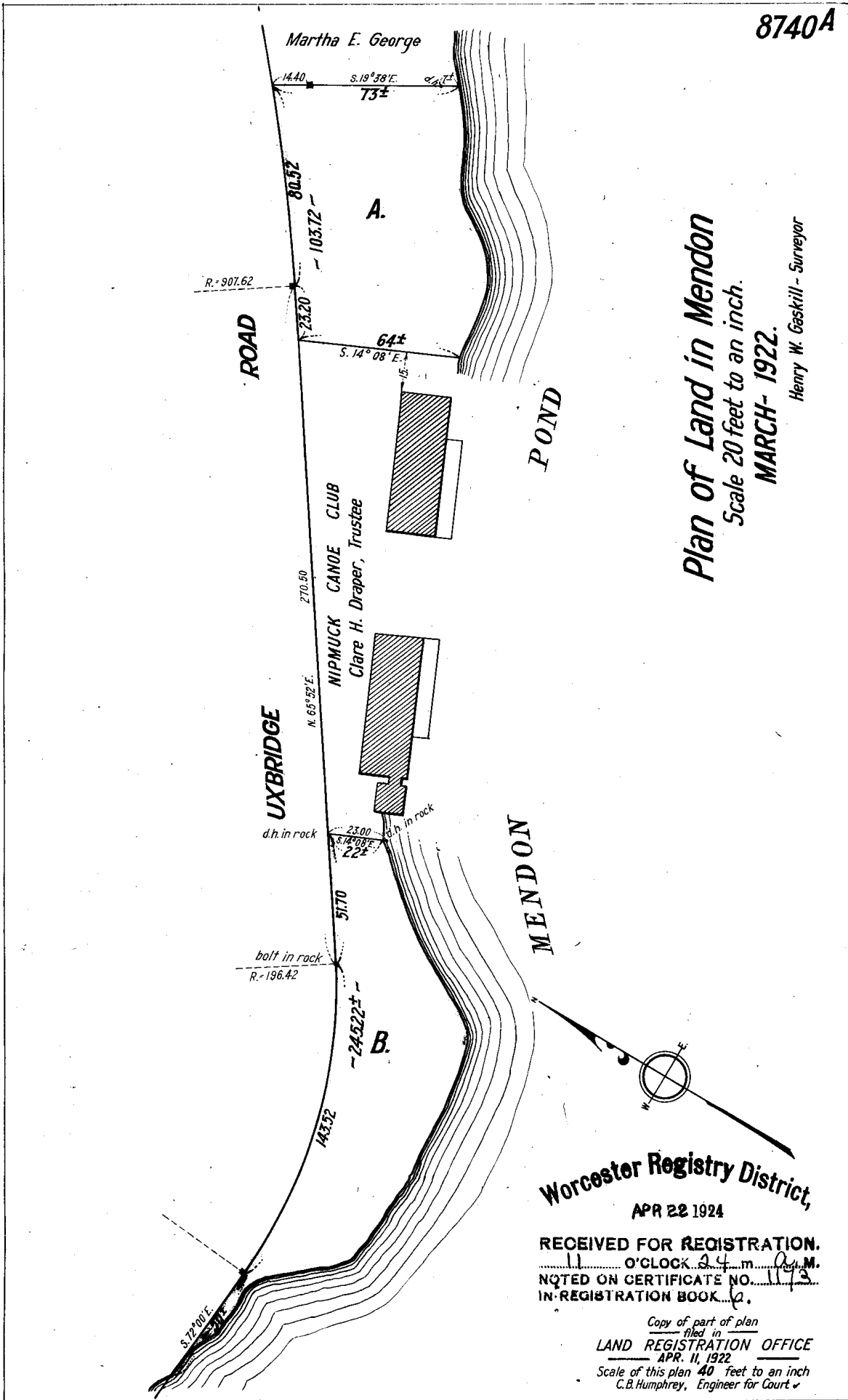


8740A



**Plan of Land in Mendon**  
 Scale 20 feet to an inch.  
**MARCH-1922.**  
 Henry W. Gaskill - Surveyor

Worcester Registry District,  
 APR 22 1924

RECEIVED FOR REGISTRATION.  
 11 O'CLOCK 24 m. A.M.  
 NOTED ON CERTIFICATE NO. 1193  
 IN REGISTRATION BOOK 6.

Copy of part of plan  
 filed in  
**LAND REGISTRATION OFFICE**  
 APR. 11, 1922  
 Scale of this plan 40 Feet to an inch  
 C.B. Humphrey, Engineer for Court ✓