

Lot A has been subdivided. See plan with Cert. #3561.

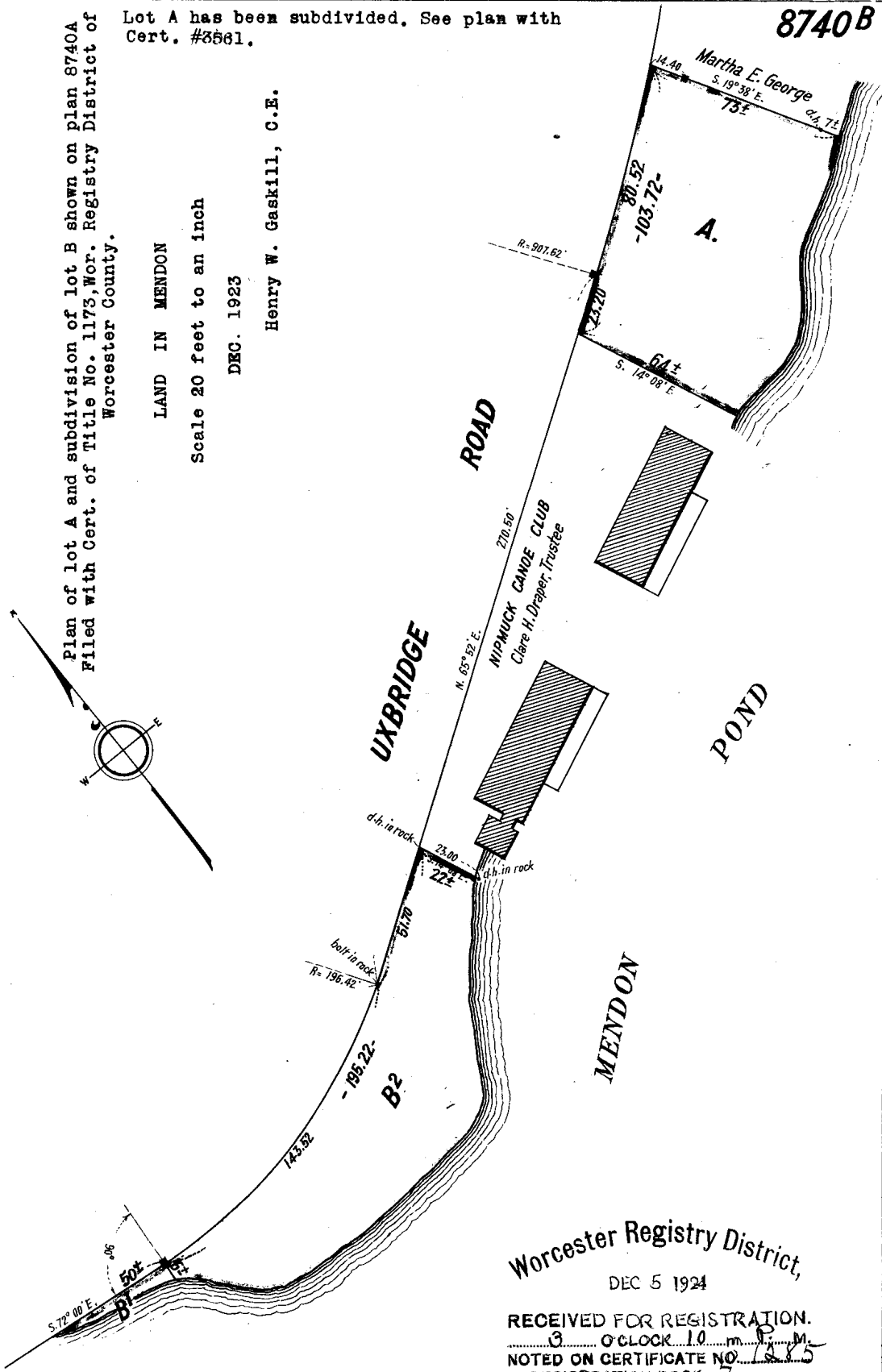
Plan of lot A and subdivision of lot B shown on plan 8740A Filed with Cert. of Title No. 1173, Wor. Registry District of Worcester County.

LAND IN MENDON

Scale 20 feet to an inch

DEC. 1923

Henry W. Gaskill, C.E.



8740B

Martha E. George
S. 19° 38' E.
75±

A.

ROAD

UXBRIDGE

POND

NIPMUCK CANOE CLUB
Clare H. Draper, Trustee

MENDON

Worcester Registry District,
DEC 5 1924

RECEIVED FOR REGISTRATION.
3 O'CLOCK 10 m P.M.
NOTED ON CERTIFICATE NO. 1285
IN REGISTRATION BOOK 7

Separate certificates of title may be issued
for lot A, B1 & B2 as shown hereon
By the Court

Nov. 29, 1924

C. B. Humphrey
Recorder.

Copy of part of plan
filed in
LAND REGISTRATION OFFICE
NOV. 22, 1924

Scale of this plan 40 feet to an inch
C. B. Humphrey, Surveyor for Court ✓