

8740C

SUBDIVISION PLAN OF LAND IN MENDON

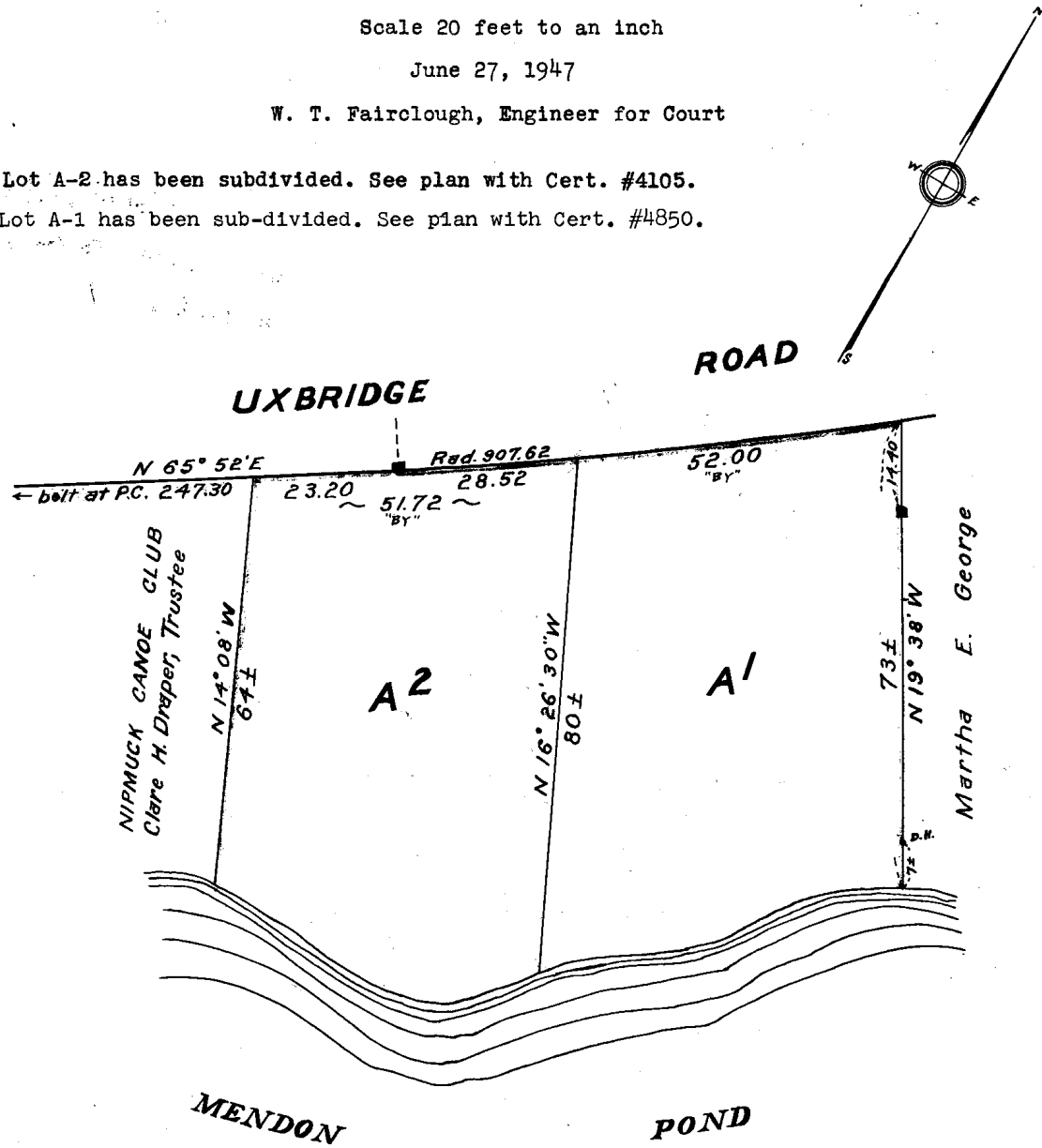
Scale 20 feet to an inch

June 27, 1947

W. T. Fairclough, Engineer for Court

Lot A-2 has been subdivided. See plan with Cert. #4105.

Lot A-1 has been sub-divided. See plan with Cert. #4850.



William H. Casey - Owner - Cert. 1284

Subdivision of Lot A
Shown on Plan 8740B
Filed with Cert. of Title No. 1285
Worcester Registry District of Worcester County

WORCESTER REGISTRY DISTRICT,
RECEIVED FOR REGISTRATION

NOV 22 1948

9 O'CLOCK - *am*
Noted on Certificate No. *3561*
in Registration Book *12*

Separate certificates of title may be issued
for lots A1 & A2 as shown hereon
By the Court

Thomas B. Cummings
Deputy Recorder.
JUNE 27 1947