

Lots B-8 & B-9 have been sub-divided. See plan with Certs. #4205 & #4206.

1399 D.

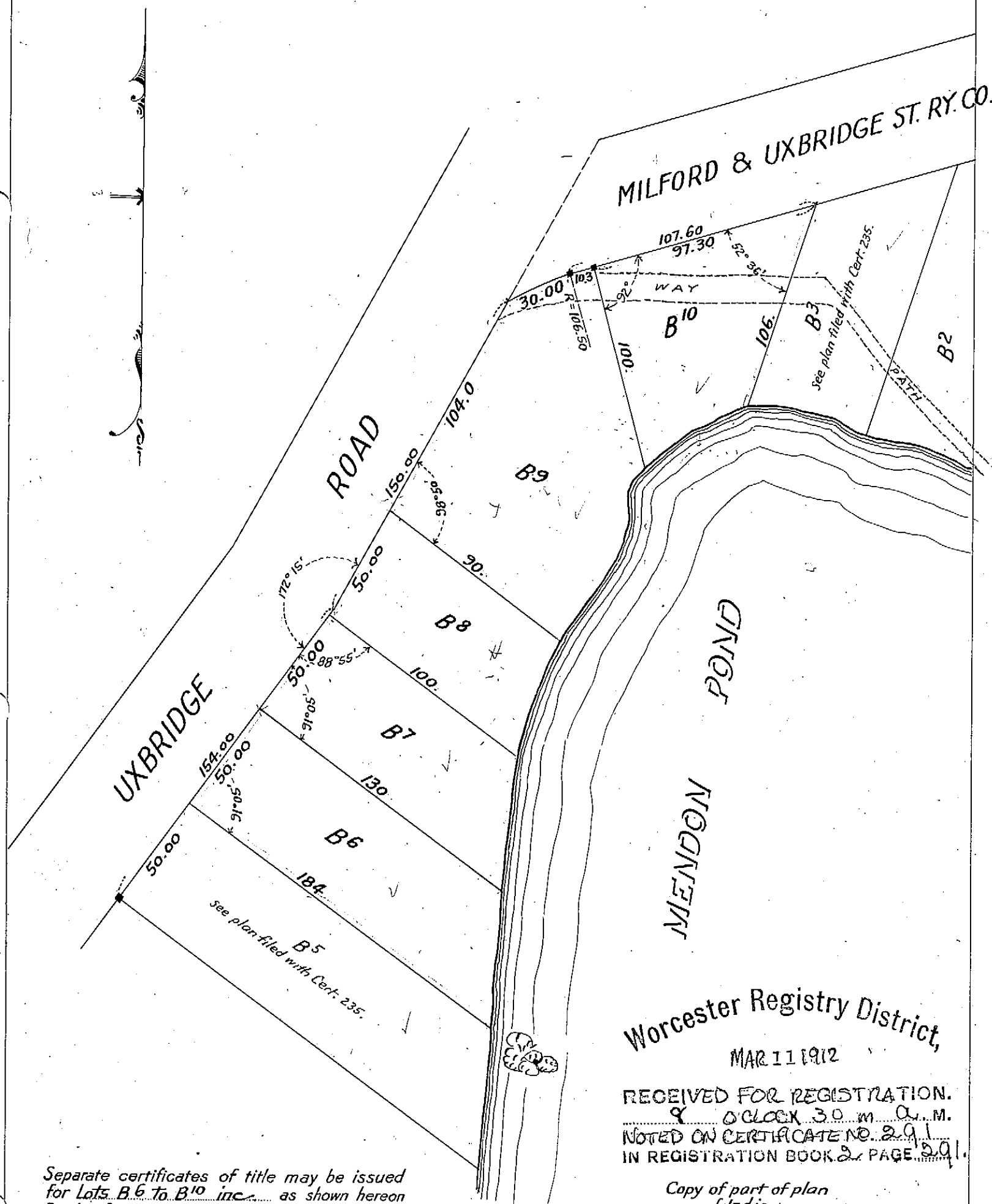
Subdivision of Lot B<sup>4</sup> shown on plan filed with Cert.  
of Title No. 235. Worcester District Registry of Deeds.

LAND IN MENDON

Scale 100 feet to an inch

OCT. 1909.

Henry W. Gaskill, C.E.



Separate certificates of title may be issued  
for Lots B<sup>6</sup> to B<sup>10</sup> inc. as shown hereon  
By the Court

Jan. 5, 1912.

*Clarence Smith*  
Recorder.

Worcester Registry District,  
MAR 11 1912

RECEIVED FOR REGISTRATION.  
8 O'CLOCK 30 m. a.m.  
NOTED ON CERTIFICATE NO. 291  
IN REGISTRATION BOOK 2, PAGE 291.

Copy of part of plan  
— filed in —  
LAND REGISTRATION OFFICE  
— Jan. 29, 1912 —  
C.B. Humphrey, Surveyor for Court.  
Scale of this plan 50 feet to an inch.