

SUBDIVISION PLAN OF LAND IN MENDON
Massachusetts Department of Public Works

P. H. Kitfield Chief Engineer

APRIL 24, 1951

1399^G

WORCESTER REGISTRY DISTRICT,
RECEIVED FOR REGISTRATION

JUN 4 1951

9 O'CLOCK m. A.M.
Filed on Certificate No. 4206
in Registration Book 22

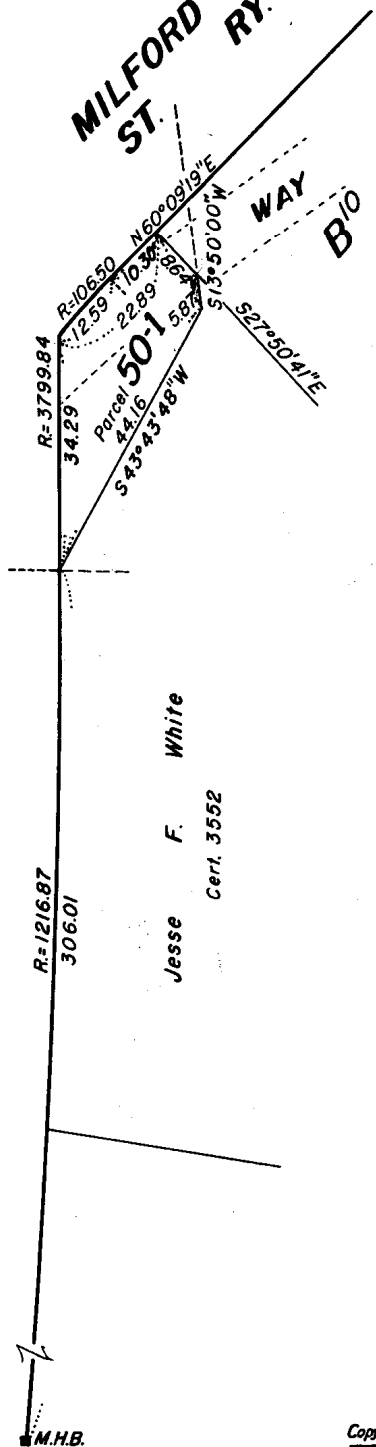


MAY 31 1951

Subdivision of part of lot B9.
Shown on Plan 1399D.
Filed with Cert. of Title No. 291.
Wor. Registry District of Worcester County.

UXBRIDGE (STATE HIGHWAY) ROAD

MILFORD and UXBRIDGE
ST. RY. CO.



Jesse F. White
Cert. 3552

M.H.B.

Separate certificates of title may be issued
for Parcel 50-1 as shown hereon
By the Court

Feb. 28, 1950

John H. Holmes
Recorder.

Copy of part of plan
filed in
LAND REGISTRATION OFFICE
MAY 4, 1951
Scale of this plan 20 feet to an inch
W. T. Fairclough, Engineer for Court