

SUBDIVISION PLAN OF LAND IN MENDON  
Massachusetts Department of Public Works  
P. H. Kitfield Chief Engineer

13991

JUNE 6, 1950

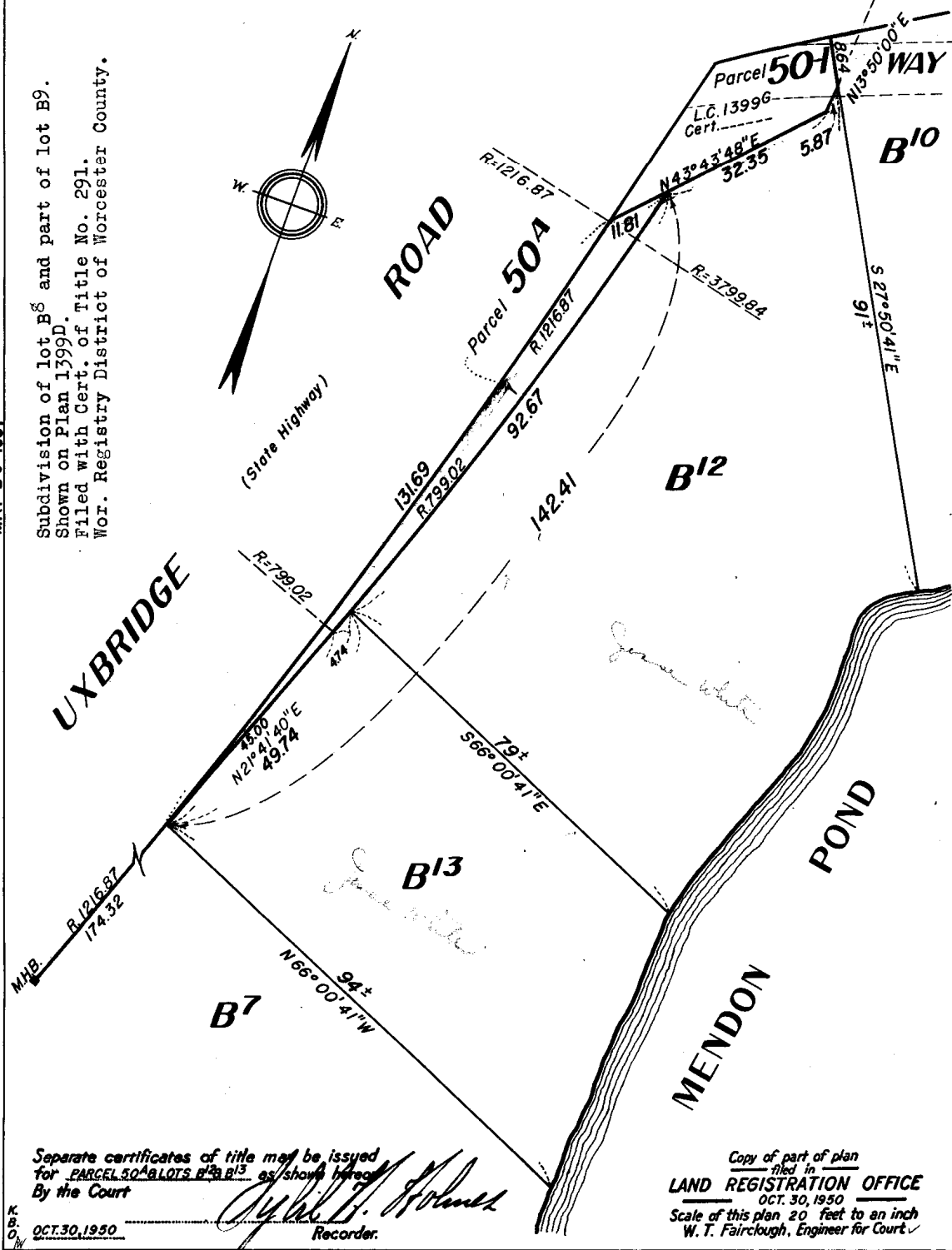
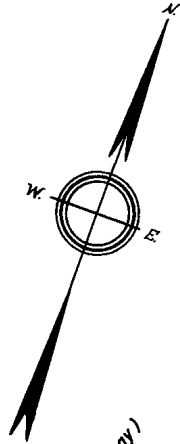
WORCESTER REGISTRY DISTRICT,  
RECEIVED FOR REGISTRATION

JUN 4 1951

9 O'CLOCK *m. A.M.*  
Noted on Certificate No. *4225*  
in Registration Book *22*

MAY 29 1951

Subdivision of lot B8 and part of lot B9.  
Shown on Plan 1399D. Title No. 291.  
Filed with Cert. of Title No. 291.  
Wor. Registry District of Worcester County.



Separate certificates of title may be issued  
for PARCEL 50A BLOTS B7, B10, B12, B13 as shown hereon  
By the Court

K.  
B.  
O.  
W.

OCT. 30, 1950

*W. T. Fairclough*  
Recorder.

Copy of part of plan  
filed in  
LAND REGISTRATION OFFICE  
OCT. 30, 1950  
Scale of this plan 20 feet to an inch  
W. T. Fairclough, Engineer for Court