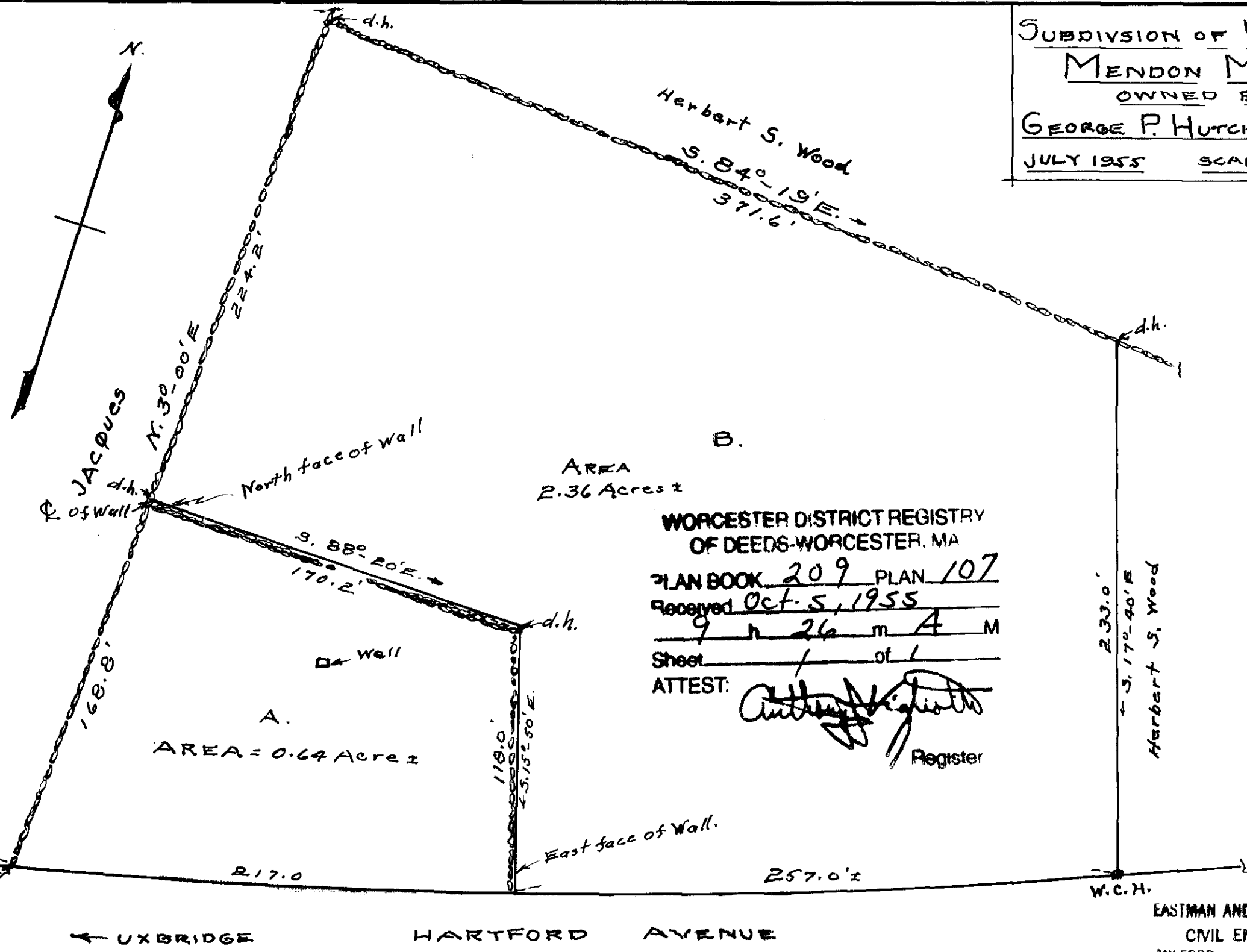


SUBDIVISION OF LAND  
 MENDON MASS.  
 OWNED BY  
 GEORGE P. HUTCHINSON ET, UX  
 JULY 1955 SCALE 1"=50'



B.  
 AREA  
 2.36 Acres ±  
 WORCESTER DISTRICT REGISTRY  
 OF DEEDS-WORCESTER, MA  
 PLAN BOOK 209 PLAN 107  
 Received Oct. 5, 1955  
9 h 26 m A M  
 Sheet 1 of 1  
 ATTEST: *Anthony Highsmith*  
 Register

UXBRIDGE Town Line  
 Mendon  
 73.5'  
 Post.  
 d.h.

EASTMAN AND CORBETT INC.  
 CIVIL ENGINEERS  
 MILFORD, 6