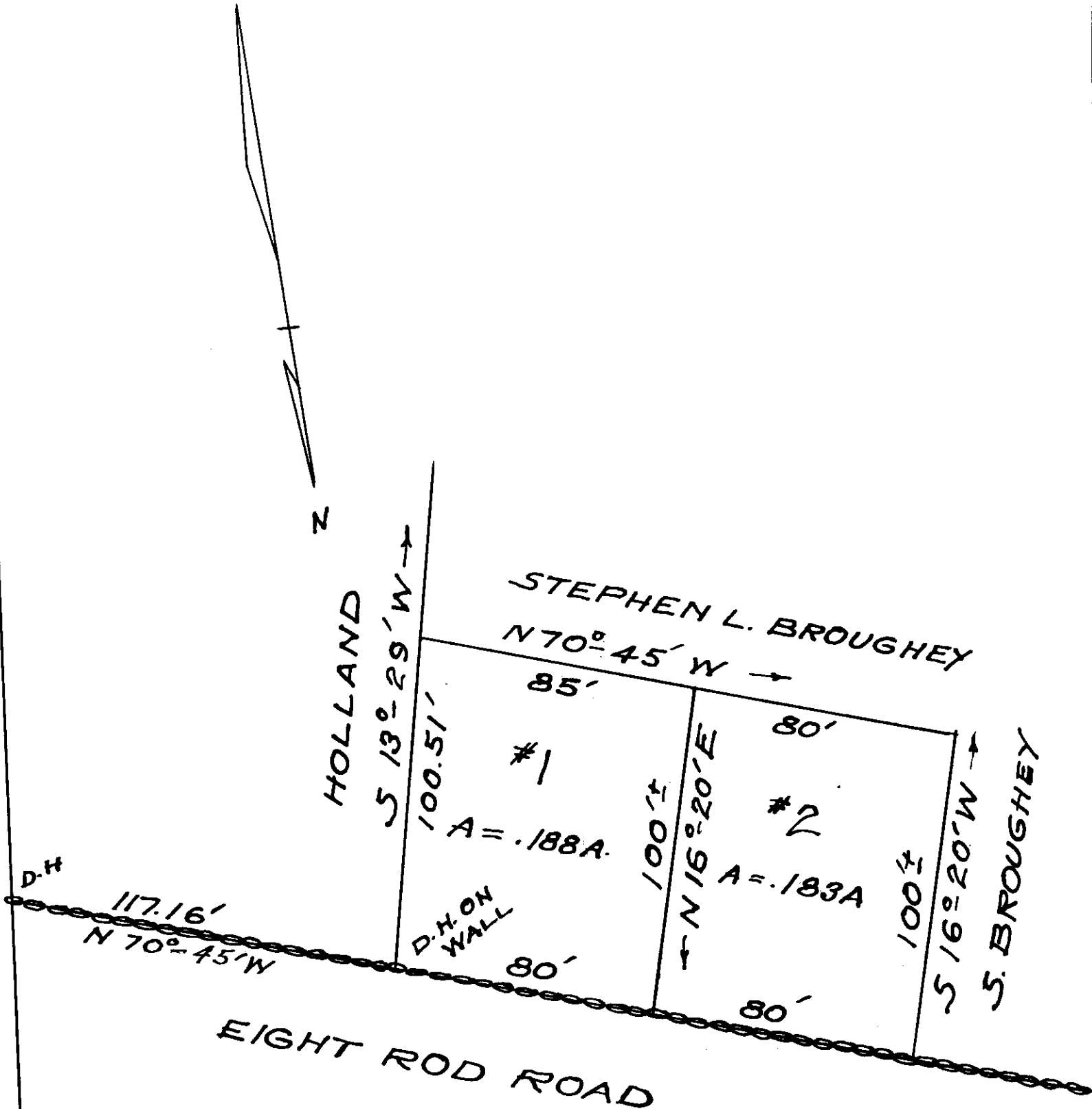


MILFORD ST. RT. 16



LAND IN MENDON MASS.

OWNED BY

STEPHENE E. BROUGHEY ET. UX.

SCALE 1" = 40' JUNE 28, 1954

PLAN & SURVEY BY ARTHUR H. FITZGERALD

NORCESTER DISTRICT REGISTRY  
OF DEEDS - WORCESTER, MA

PLAN BOOK 199 PLAN 95

Received Aug 27, 1954

9 24 m A M

Sheet 1 of 1

ATTEST:

*Arthur H. Fitzgerald*  
Register