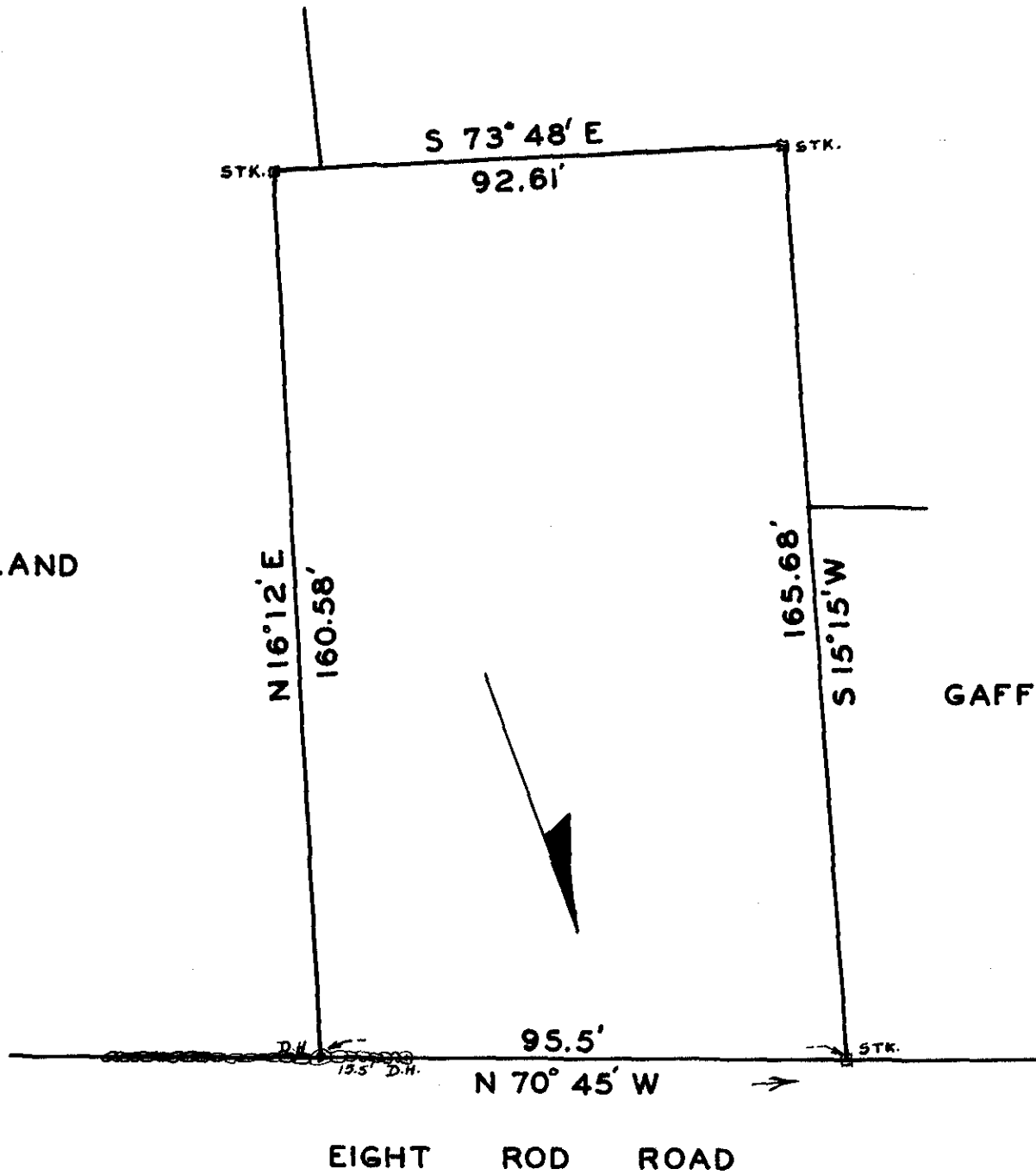


BROUGHEY

HOLLAND

GAFFNEY



LAND IN MENDON MASS
 OWNED BY
 STEPHEN E. & MARY BROUGHEY

SCALE: 1" = 30' DEC. 6, 1958
 P. MAC NEVIN

WORCESTER DISTRICT REGISTRY
 OF DEEDS-WORCESTER, MA
 PLAN BOOK 238 PLAN 14
 Received MAR. 23 1959
 10 02 AM
 Sheet 1 of 1
 ATTEST: *[Signature]* Registrar