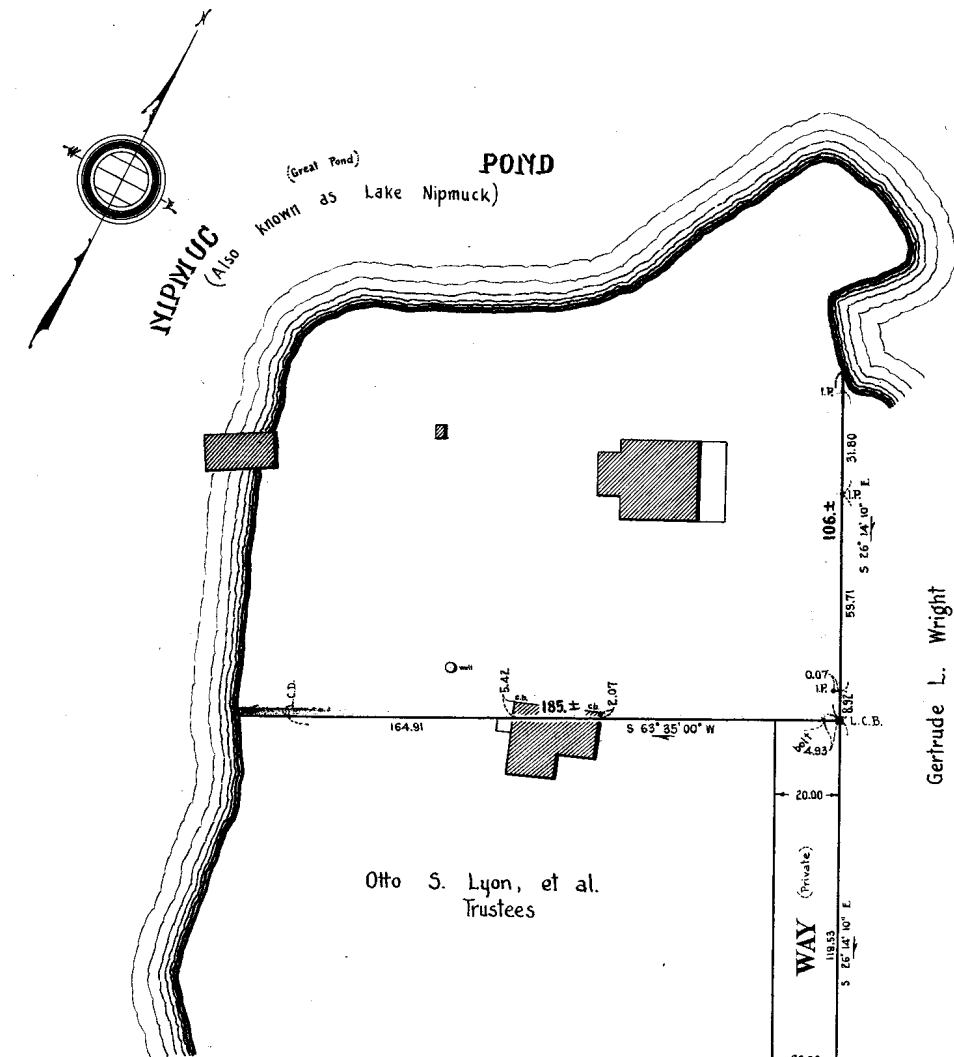


This land has been sub-divided. See plan #22890-B with Cert. #6092.

22890A

PLAN OF LAND IN MENDON
Schofield Brothers, Civil Engineers
September 30, 1950

DEC 22 1953



WORCESTER REGISTRY DISTRICT,
RECEIVED FOR REGISTRATION

FEB 10 1954

Book 32, P. 14
Noted on Certificate No. 4683
in Registration Book 24

Copy of part of plan
filed in
LAND REGISTRATION OFFICE
MARCH 26, 1951
Scale of this plan 40 feet to an inch
W. T. Fairclough, Engineer for Court /s.