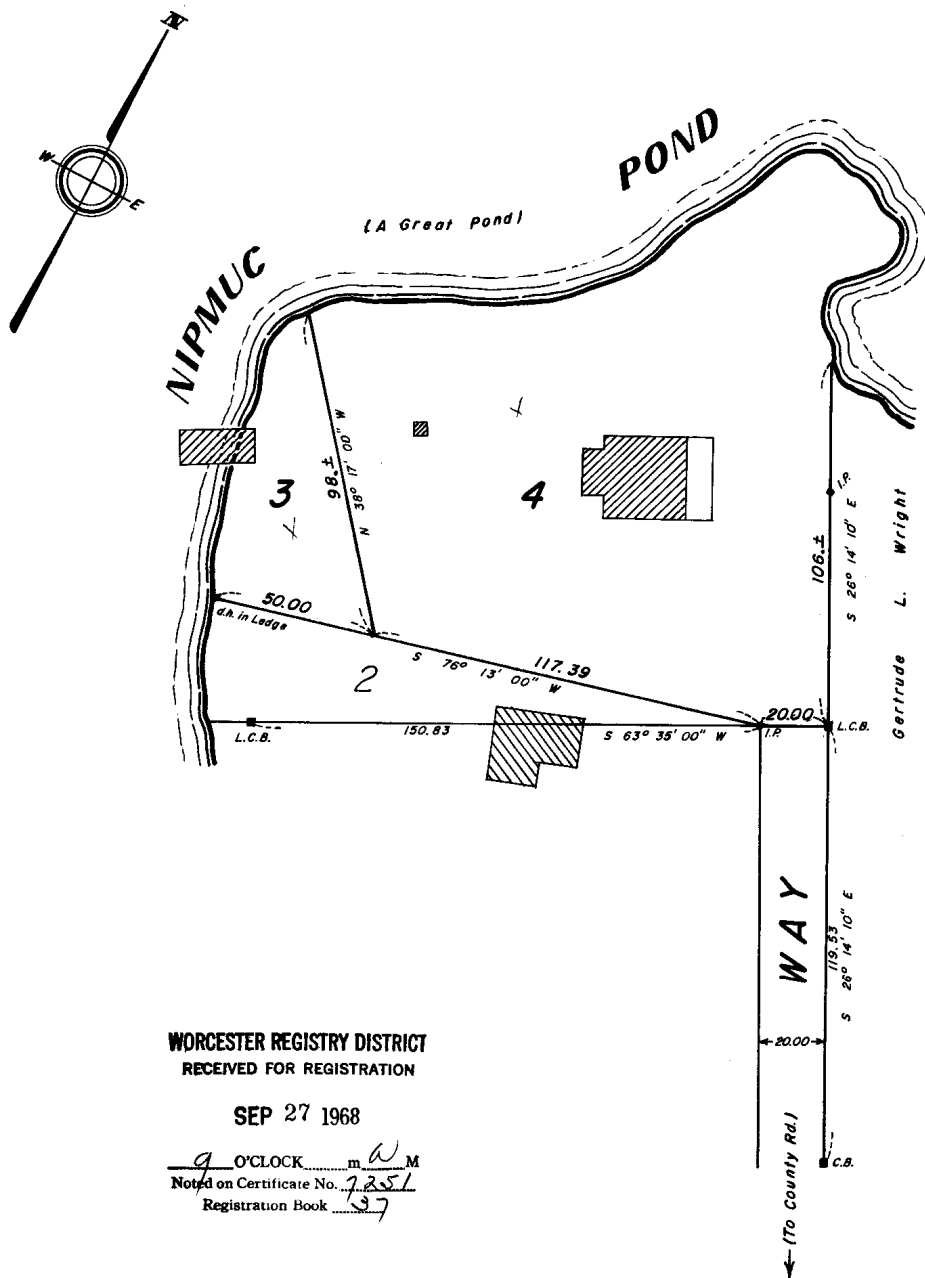


#7251

SUBDIVISION PLAN OF LAND IN MENDON
Gleason Engineering Company, Surveyors
April 18, 1968

22890^C

WORCESTER REGISTRY DISTRICT
RECEIVED FOR REGISTRATION

SEP 27 1968

9 O'CLOCK m 6 M
Noted on Certificate No. 7251
Registration Book 37

Subdivision of Lot 1
Shown on Plan 22890^B
Filed with Cert. of Title No. 6092
Worcester Registry District of Worcester County

Separate certificates of title may be issued for land
shown hereon as Lots 3 and 4
By the Court.

JUNE 20, 1968

Maynard R. Gleason
Deputy Recorder

Copy of part of plan
filed in
LAND REGISTRATION OFFICE
JUNE 20, 1968
Scale of this plan 40 feet to an inch
C. M. Anderson, Engineer for Court