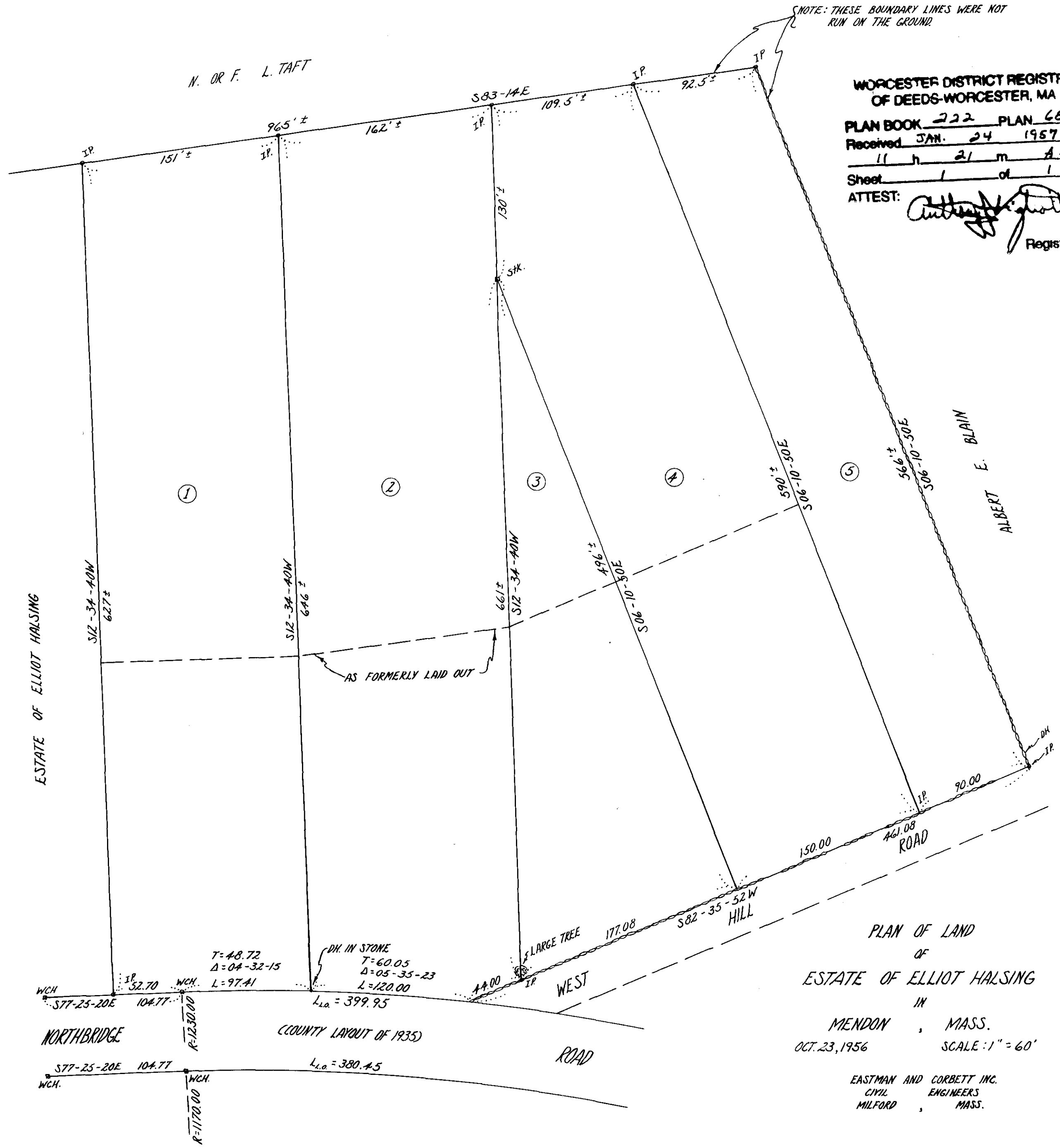
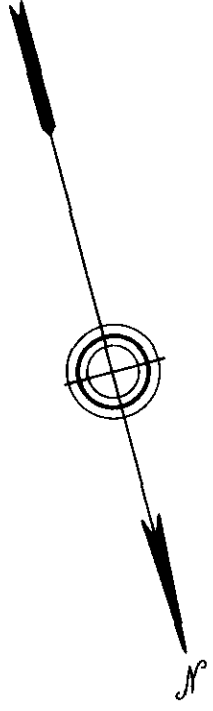


NOTE: THESE BOUNDARY LINES WERE NOT RUN ON THE GROUND

N. OR F. L. TAFT

WORCESTER DISTRICT REGISTRY
 OF DEEDS-WORCESTER, MA
 PLAN BOOK 222 PLAN 65
 Received JAN. 24 1957
 11 h 21 m A.M.
 Sheet 1 of 1
 ATTEST: *Albert E. Blain*
 Register



ESTATE OF ELLIOT HALSING

NORTHBRIDGE

COUNTY LAYOUT OF 1935

PLAN OF LAND
 OF
 ESTATE OF ELLIOT HALSING
 IN
 MENDON, MASS.
 OCT. 23, 1956 SCALE: 1" = 60'

EASTMAN AND CORBETT INC.
 CIVIL ENGINEERS
 MILFORD, MASS.