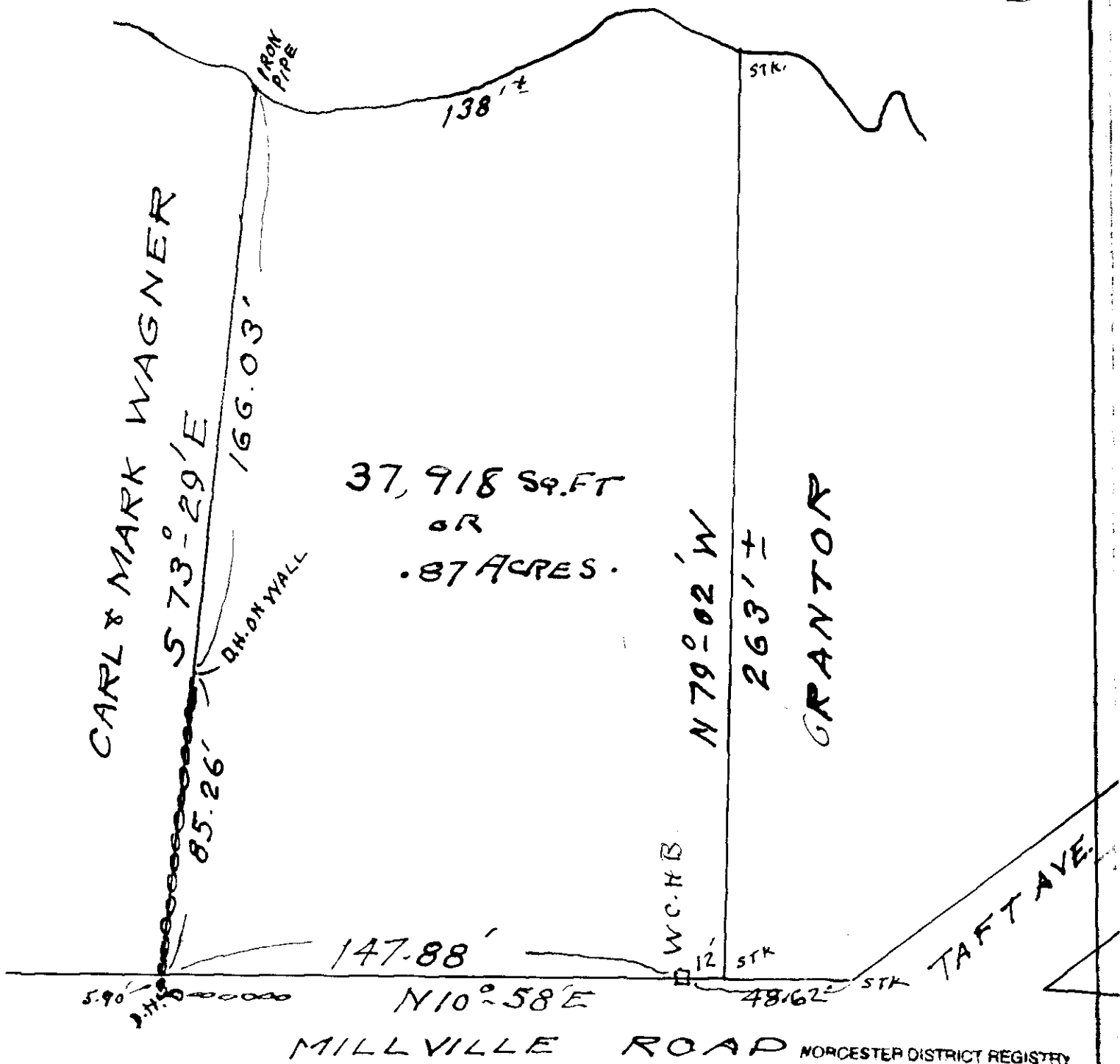


LAKE

NIPMUC



WORCESTER DISTRICT REGISTRY OF DEEDS-WORCESTER, MA

PLAN BOOK 167 PLAN 1  
 Received June 9 1950  
3 p. 32 in P M  
 Sheet 1 of 1

ATTEST: *Arthur H. Fitzgerald*  
 Register

PLAN OF LAND IN MENDON MASS.  
 DEEDED BY  
 THOMAS KELLY  
 TO  
 CHARLES W. ARRAND ET. AL.  
 SCALE 1" = 40' MAY 18, 1950  
 PLAN & SURVEY BY ARTHUR H. FITZGERALD