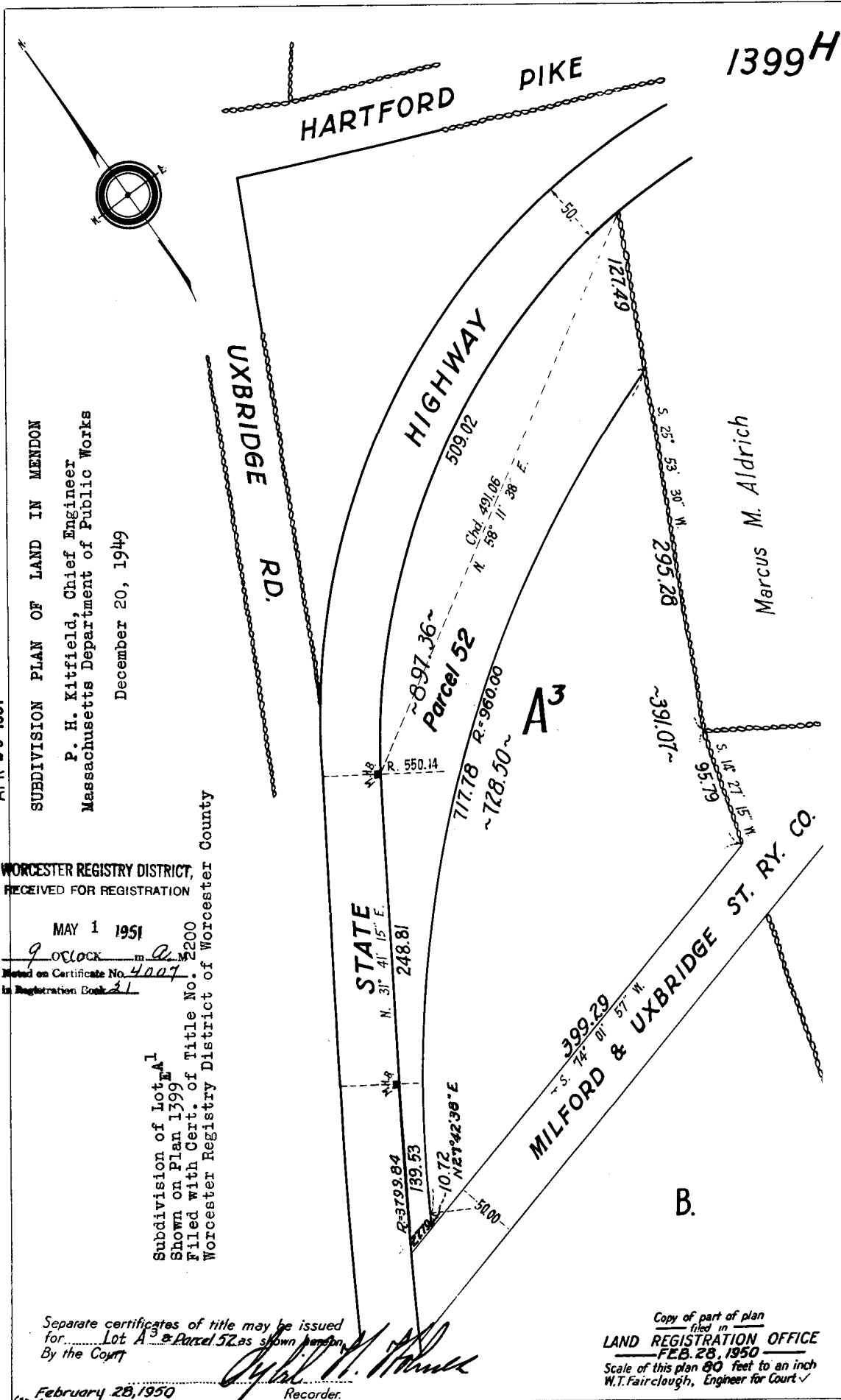


This land has been sub-divided. See Plan #1399-K with Cert. #6387.



APR 26 1951

SUBDIVISION PLAN OF LAND IN MENDON

P. H. Kitfield, Chief Engineer  
Massachusetts Department of Public Works

December 20, 1949

WORCESTER REGISTRY DISTRICT,  
RECEIVED FOR REGISTRATION

MAY 1 1951

9 o'clock in a.m.  
Noted on Certificate No. 4007  
in Registration Book 21

Subdivision of Lot A<sup>1</sup>  
Shown on Plan 1399  
Filed with Cert. of Title No. 3200  
Worcester Registry District of Worcester County

Separate certificates of title may be issued  
for Lot A<sup>3</sup> & Parcel 52 as shown hereon.  
By the Court

February 28, 1950

Recorder.

*[Handwritten Signature]*

Copy of part of plan  
filed in  
LAND REGISTRATION OFFICE  
FEB. 28, 1950  
Scale of this plan 80 feet to an inch  
W.T. Fairclough, Engineer for Court ✓