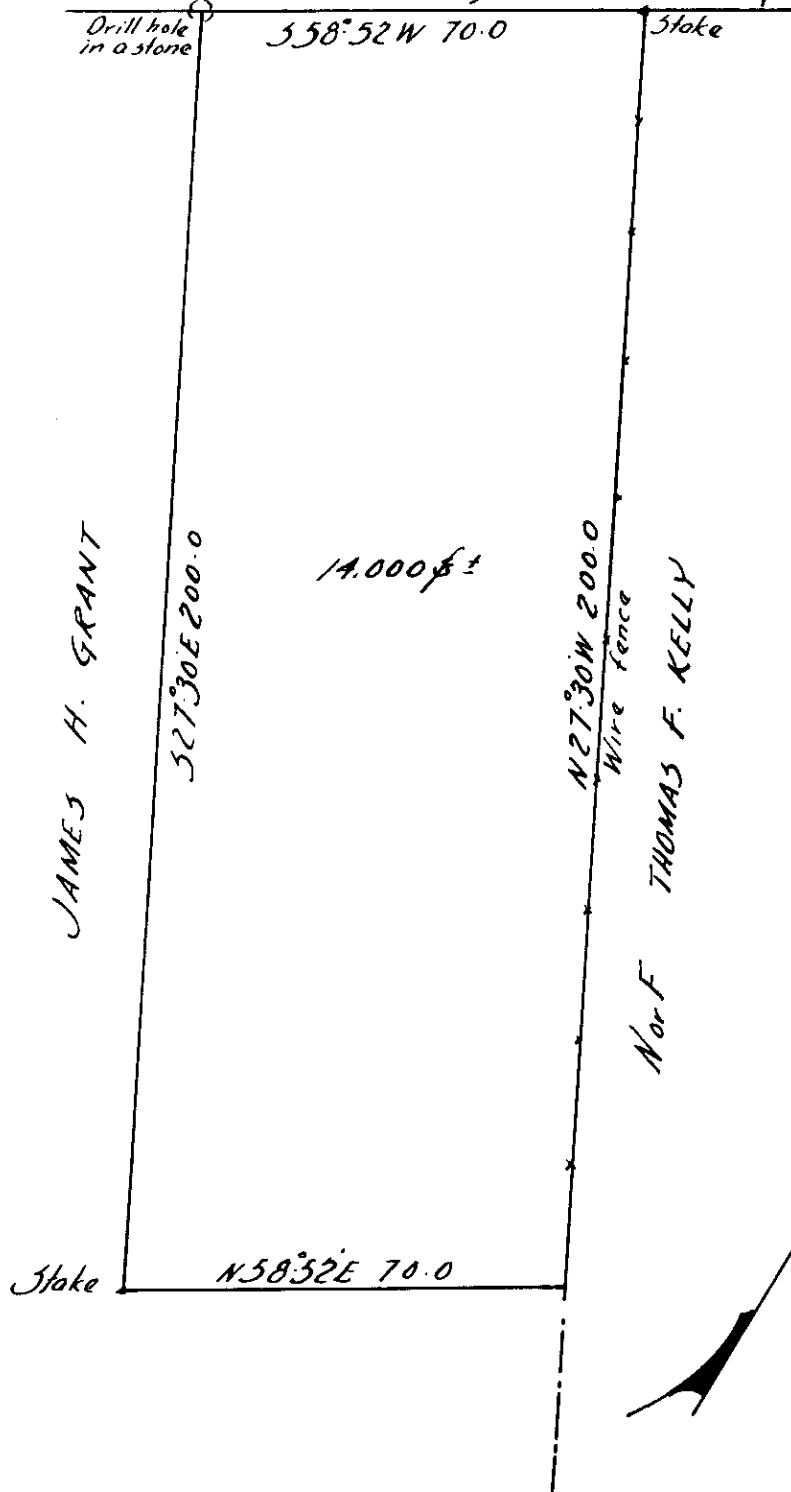


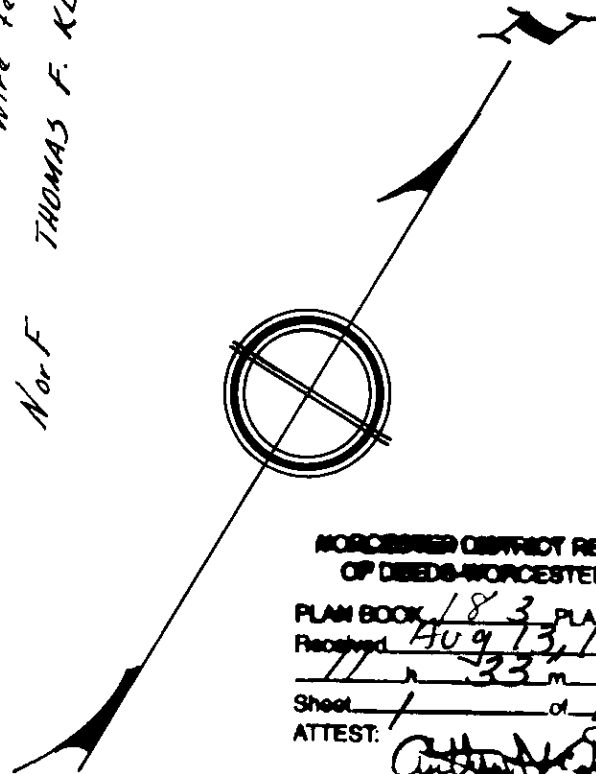
to Millville MILLVILLE ROAD

Worcester County location line



PLAN OF LAND  
 sold by  
 JAMES H. GRANT  
 MENDON, MASS.  
 SEPT. 1951

Scale: 1 inch = 30 feet



WORCESTER DISTRICT REGISTRY  
 OF DEEDS-WORCESTER, MA  
 PLAN BOOK 183 PLAN 63  
 Received AUG 13, 1952  
 Sheet 1 of 1  
 ATTEST: *[Signature]*  
 Register

F. J. BRENNAN  
 SURVEYOR  
 UXBIDGE, MASS.